

MONTHLY MEMBERSHIP PROGRESS REPORT

District 5M 7

Results as of: 3/31/2024

GMT:

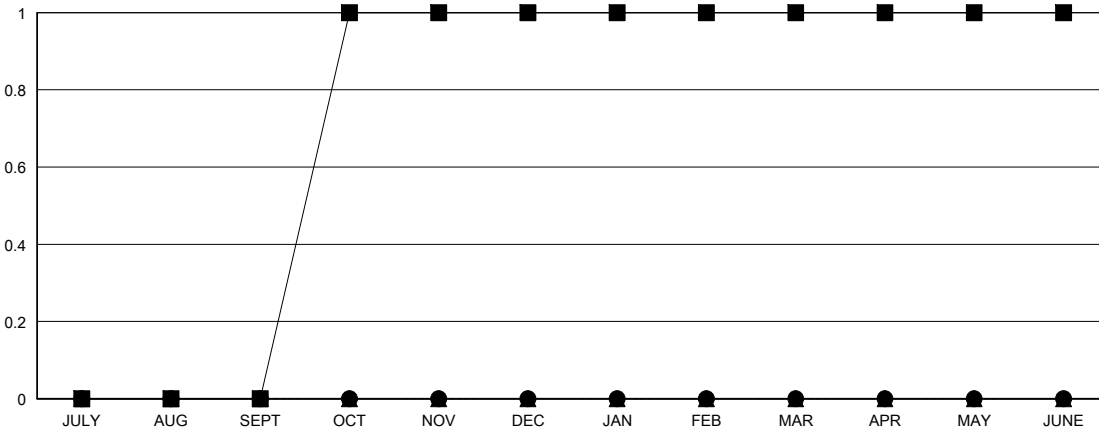
LOCATION MINNESOTA

GMT CA

Clubs			
RESULTS FOR 2023-2024			
QUARTER	NEW CLUB GOAL	NEW CLUBS	DROPPED CLUBS
JULY/AUG/SEPT	0	0	1
OCT/NOV/DEC	1	0	0
JAN/FEB/MAR	0	0	0
APR/MAY/JUNE	0	0	0

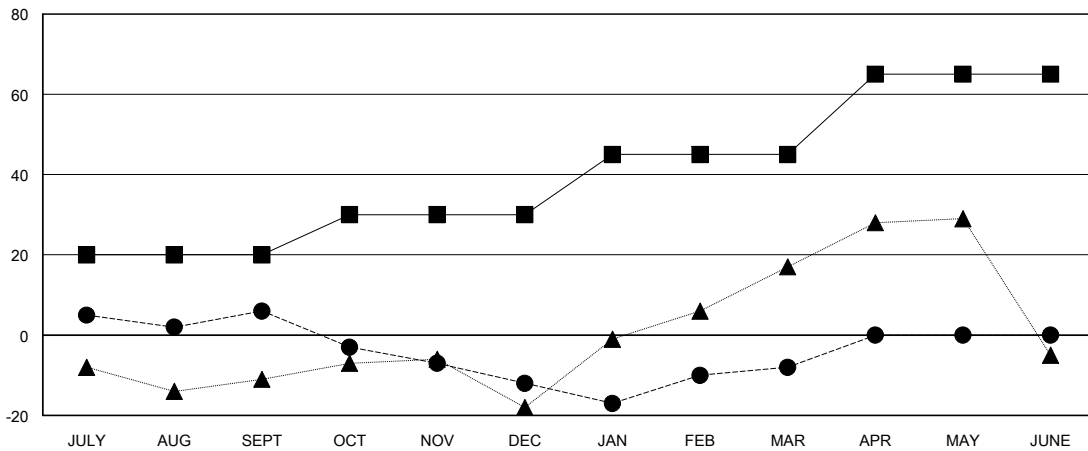
Members			
RESULTS FOR 2023-2024			
QUARTER	MEMBER GROWTH NET GOAL	MEMBER GROWTH ACTUAL	DROPPED MEMBERS ACTUAL (including transfers)
JULY/AUG/SEPT	20	56	45
OCT/NOV/DEC	10	44	60
JAN/FEB/MAR	15	39	31
APR/MAY/JUNE	20	0	0

GOALS AND ACTUAL NEW CLUBS CUMULATIVE



- - CURRENT YEAR GOALS FOR NEW CLUBS
- - CURRENT YEAR ACTUAL NEW CLUBS
- ▲ - LAST YEAR ACTUAL NEW CLUBS

GOALS AND ACTUAL MEMBERS CUMULATIVE



- - MEMBER GROWTH NET GOAL
- - MEMBER GROWTH ACTUAL
- ▲ - LAST YEAR MEMBERSHIP ACTUAL

DROPPED CLUBS: 1	
DROPPED MEMBERS	
DECEASED	23
CLUB CANCELLED	0
OTHER	113
TOTAL	136

36 CLUBS OF 52 ADDED 1 OR MORE NEW MEMBERS

GENDER DISTRIBUTION	
MALE	1,177 (68.79%)
FEMALE	528 (30.86%)

[CLICK HERE FOR CUMULATIVE MEMBERSHIP DATA](#)

TOTAL FAMILY UNIT MEMBERS	346
FAMILY MEMBERS PAYING HALF DUES	180